



## SEGS24C2K\_13, SEGS48C2K\_13, SEGS23C2K\_13

### Single Medium Intensity Obstruction Light

#### PHOTOMETRIC STANDARD COMPLIANCE



**ICAO ANNEX 14, VOLUME I;**  
**TYPE C - MEDIUM INTENSITY**  
**OBSTACLE LIGHT.**

**CAA-CAP 168**  
**MEDIUM INTENSITY**  
**OBSTACLE LIGHT.**

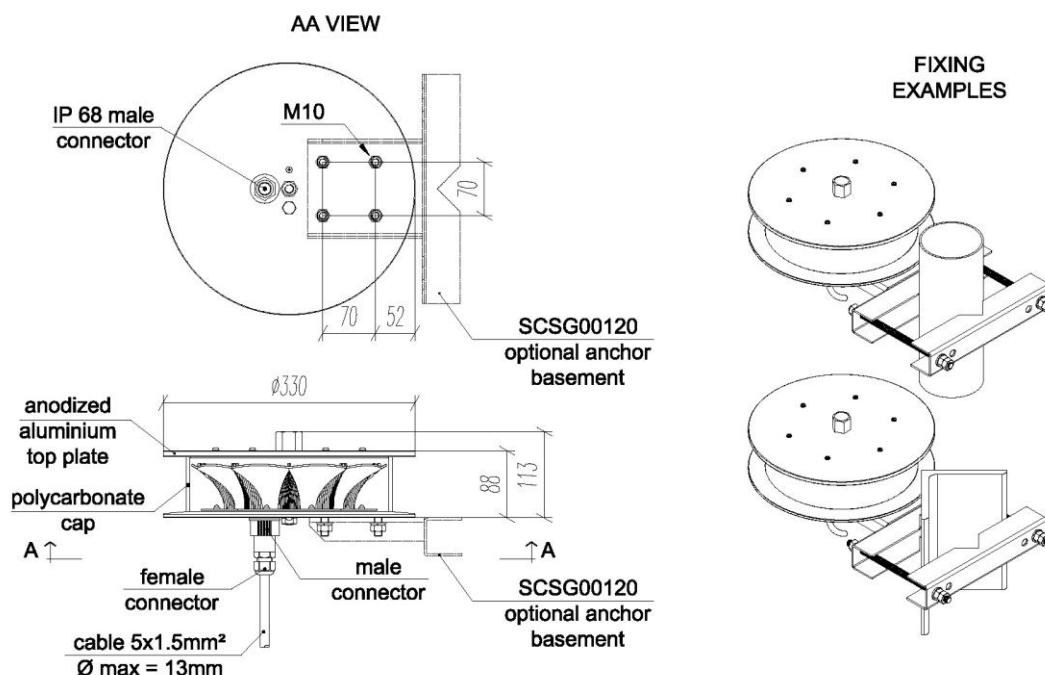
#### KEY FEATURES & BENEFITS

- designed and manufactured in Italy by Clampco Sistemi
- the lowest power consumption in the market
- easy way for mounting – plug 'n' play connection
- EMF immunity up to 60V/m

#### SPECIFICATIONS

Order Code	SEGS24C2K_13	SEGS48C2K_13	SEGS23C2K_13
Typical use	Night time		
Light source	LED		
Type of beacon	Steady		
Colour	Red according to CIE Chromaticity Boundary		
Light Intensity	2000 cd		
Horizontal coverage	360°		
Input voltage	24 Vdc	48 Vdc	110 – 230 Vac
Average power consumption	36 W	30 W	35 W
Average life	100.000 hours		
Temperature range	from -40 °C to +55 °C		
Protection degree	IP66		
Material of the body	Anodized aluminum		
Material of the transparent cap	Polycarbonate		
Weight	6,0 kg		
Connection	M/F connector IP68 for cable up to ø13mm		
Radiation Shield	Stainless Steel AISI 304 to be ordered separately		
Fixing SCSG00120	Hot dip galvanized steel anchor basement pole mounting (ø max 114mm) or L mounting (up to 160mm) to be ordered separately.		

#### TECHNICAL DRAWINGS



Clampco Sistemi reserves the right to make changes at any time in order to supply the best product possible.