



## SEGS23B32

### Low Intensity Obstruction Light – ICAO type B



#### KEY FEATURES

- Low cost
- Low power consumption
- Long life light source
- Lightweight
- Easy way for mounting
- Simple cable connection
- Compact design
- Easy way for bulb replacement
- Resistance to corrosion

#### APPLICATION

- Airports
- Telecommunication towers
- Buildings

#### SPECIFICATION

Typical use	Night time
Light source	LED
Type of beacon	Fixed
Colour	Red according to CIE Chromaticity Boundary
Light Intensity	> 32.5 cd
Horizontal coverage	360°
Input voltage	100 - 230 Vac
Power consumption	6 W
Average life	100000 hours
Temperature range	from -40 °C to +55 °C
Protection degree	IP66
Material of the body	GRP red body (UL94-HB)
Material of the transparent cap	Polycarbonate CAP (UL94-V2)
Weight	0.7 kg
Dimensions (LxWxH)	165x150x200 mm

#### PHOTOMETRIC STANDARD COMPLIANCE

- **ICAO Annex 14**, volume I; International standards and recommended practices: Aerodrome design and operations, 5th Edition, July 2009 – Type B low intensity obstacle light
- **FAA** United States Federal Aviation Administration AC 150/5345-43F; Specification for obstruction lighting equipment, December 2006; Type L-810

#### ENCLOSED ACCESSORIES

- Stainless steel anchor basement, complete with nuts and bolts, for poles with diameter from 25 mm to 82 mm  
3-Pole, IP 68, watertight connector (male + female)

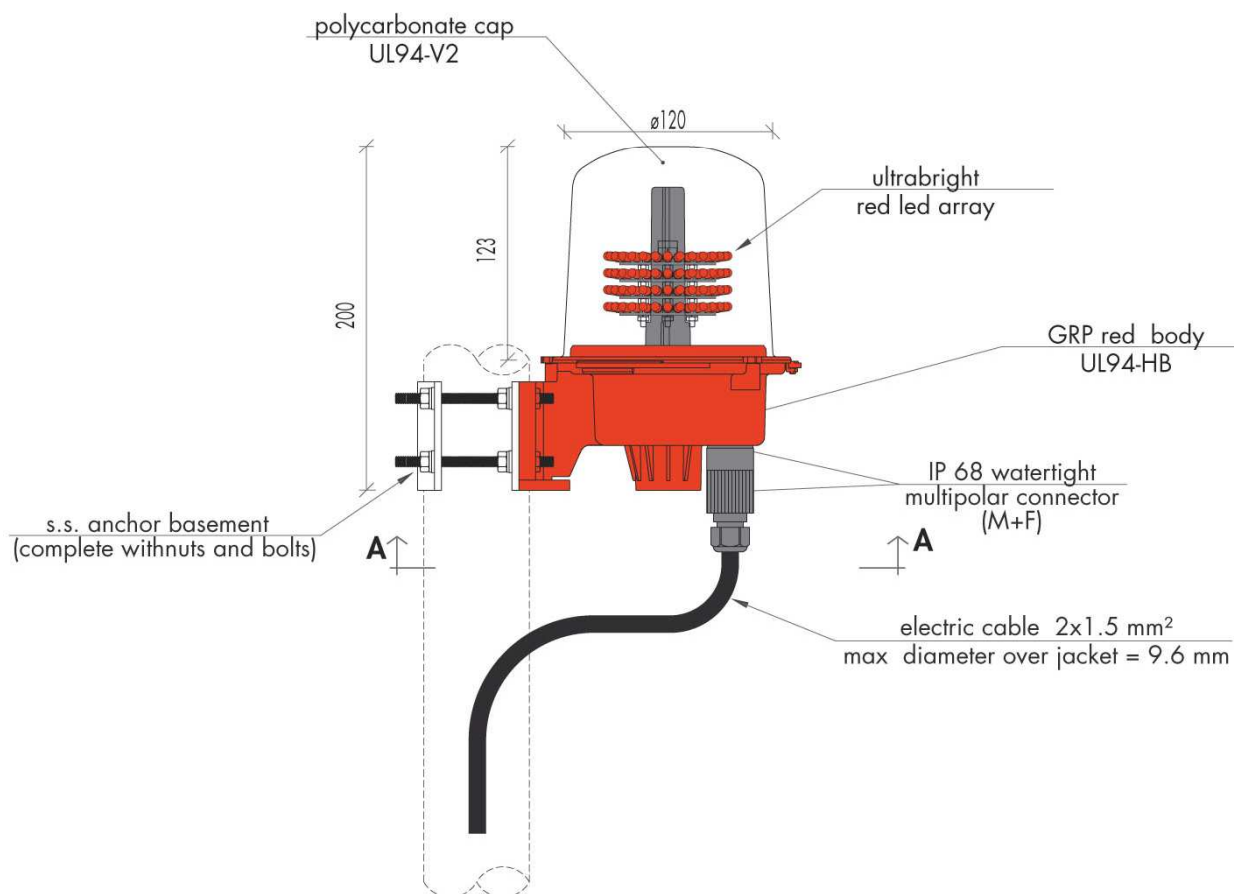
#### OPTIONS

- Different input voltages are: 12 Vdc (**SEGS12B32**), 24 Vdc (**SEGS24B32**) and 48 Vdc (**SEGS48B32**)
- Available as a dual unit, main and stand-by (**SEGD23B32**) complete with Junction Box
- Internal photoelectric switch (**SEGS23B32\_SEI**)
- Control board for power supplying and monitoring
- Anchor basement for pole with diameter till 114 mm

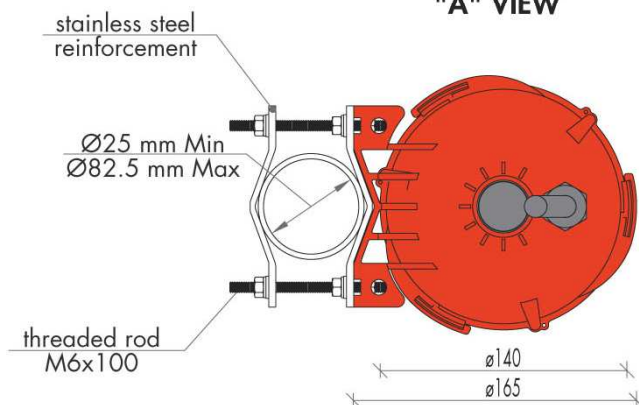


**SEGS23B32**

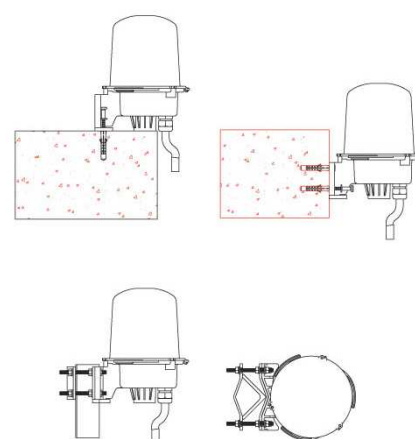
**Low Intensity Obstruction Light – ICAO type B**



**"A" VIEW**



**fixing examples**



measures are in mm



Designed and manufactured in Italy by Clampco Sistemi